

# Land Auction!

Friday, March 21, 2025 at 12:30PM  
at Factory Street Brewing,  
210 Factory St, South Boston, VA

**Growing Timber, Creeks, Privacy!**

**Attn Agents: 2% Commission Avail.**

# 418 ACRES

4 Locations in Nathalie | Offered in 5 Tracts

## 5 Tracts in Halifax County, VA

### DETAILS

A total of 418 acres in 4 locations across Nathalie offered in 5 tracts. Tracts were timbered in 2012 and replanted in pine. Several tracts have trails through the property, and all tracts have creeks, streams, or river frontage.

5 great tracts to choose from for your home, weekend getaway, hunting camp, recreational retreat, or growing timber investment.

### PREVIEW DATES

Agent will be on Tract 1A to provide information during the following times:

- Wednesday, March 5 from 3-5PM
- Sunday, March 9 from 1-3PM
- Sunday, March 16 from 1-3PM
- Drive by viewing OK anytime during daylight hours. 4WD or AWD recommended especially when wet

### AUCTION SITE

Public auction held Friday, March 21, 12:30PM at Factory Street Brewing in South Boston. Online bidding available 30 days prior to live auction and will conclude with the live auction.

### TERMS

5% buyer's premium. 10% deposit due at auction. Closing on or about 30 days. Full terms and conditions online.

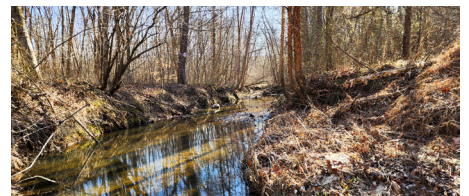
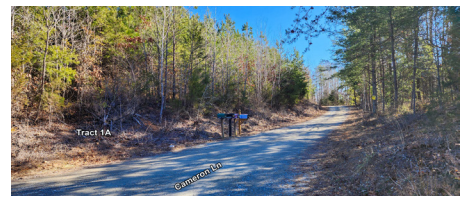
**Details at TRFAuctions.com**

### TRACT 1A: 100 Acres on Cameron Ln

Great tract for hunting, recreation, and timber investment w/ long frontage on Cow Creek, long road frontage, and growing timber.

- 106.44 acres on the corner of Tobacco Rd and Cameron Ln
- Halifax County PRN# 2013
- Timbered in 2012 and replanted in pine
- Frontage: ±850' on Tobacco Rd & ±4,745' on Cameron Ln (pvt)
- Long ±6,040' of creek frontage on Cow Creek
- FROM BROOKNEAL: US-501S 1mi to RIGHT on VA-40W. 5.8mi to LEFT on Tobacco Rd (647). 1.6mi to LEFT on Cameron Ln. Tract 1A on left and continues for 0.9mi to end of property.
- FROM HALIFAX: US-501N 13mi to LEFT on Cody Rd (603). 2.3mi to RIGHT on Tobacco Rd (647). 2.3mi to RIGHT on Cameron Ln. Tract 1A on left.

GPS: adjoining property is 3072 Cameron Ln, Nathalie, VA



www.TRFAuctions.com

434.847.7741



Sale Site Phones for Auction Day:  
434.660.5159 | 434.610.3182 | 434.610.2597

Torrence, Read, & Forehand Auctions | 101 Anno Ct, Forest, VA 24551 | info@trfauctions.com | VAAF501

# 5 Tracts in Halifax County



## TRACT 1B: 62 Acres on Cameron Ln

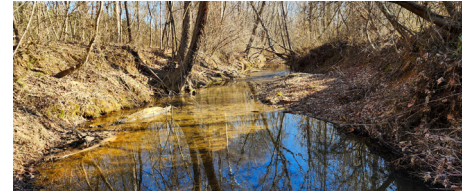
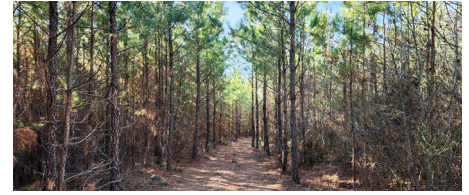
Great tract for hunting, recreation, and timber investment with scenic frontage on Childrey Creek and nice trail into property.

- Halifax County PRN# 20135
- Timbered in 2012 and replanted in pine
- Trail through property to old barn (not far from creek)
- Frontage on Cameron Ln (pvt) ±1,444'
- Frontage on Childrey Creek ±1,769'

**FROM BROOKNEAL:** US-501S 1mi to RIGHT on VA-40W. 5.8mi to LEFT on Tobacco Rd (647). 1.6mi to LEFT on Cameron Ln. 0.7mi to Tract 1B on right.

**FROM HALIFAX:** US-501N 13mi to LEFT on Cody Rd (603). 2.3mi to RIGHT on Tobacco Rd (647). 2.3mi to RIGHT on Cameron Ln. 0.7mi to Tract 1B on right.

**GPS:** nearby property is 3072 Cameron Ln, Nathalie, VA. Property is approx. 0.5mi past this address.



## TRACT 2: 94 Acres on Banister River (Rose Ln)

Nice riverfront tract for hunting, timber, or private retreat.

- Halifax County PRN# 20132
- Timbered in 2012 and replanted in pine
- On Rose Trail approx. 1 mile off Chestnut Rd
- Long interior stream plus ±1,967' of frontage on Banister River
- Interior trail most of the way through the property.

**FROM BROOKNEAL:** US-501S 8.5mi to RIGHT on Cody Rd (603). 2mi to LEFT on Leda Grove Rd. 2.7mi to LEFT on Chestnut Rd (628). 1.1mi to RIGHT on Rose Trail. 0.5mi to bear left. 0.5mi to bear right. Tract 2 straight ahead.

**FROM HALIFAX:** US-501N 9mi to LEFT on Chestnut Rd (628). 3.8mi to LEFT on Rose Trail. 0.5mi to bear left. 0.5mi to bear right. Tract 2 straight ahead.

**GPS:** property near easement is 4185 Chestnut Rd, Nathalie VA



## TRACT 3: 92 Acres on Terrible Creek (Bates Trl)

Great tract for duck hunters, hunting, recreation, timber investment, or private retreat.

- Halifax County PRN#s 20139 & 20140
- Timbered in 2012 and replanted in pine w/ trail through property
- Interior streams and some frontage on Terrible Creek
- Pond / wetland area near creek perfect for duck hunting

**FROM BROOKNEAL:** US-501S 9mi to LEFT on Volens Rd. 3.5mi to RIGHT on Liberty Rd (642). 1.8mi to LEFT on Lower Liberty Rd (641). 1.4mi to RIGHT on Bates Trl. 0.2mi to LEFT at sawmill. 0.2mi to right into woods just after field.

**FROM HALIFAX:** US-501N 4.5mi to RIGHT on Woodbourne Rd (610). 0.6mi to RIGHT on Woodbourne Rd (610). 1mi to LEFT on Lower Liberty Rd (641). 1.9mi to LEFT on Bates Trl. 0.2mi to LEFT at sawmill. 0.2mi to right into woods just after field.

**GPS:** property near easement is 1113 Bates Trail, Nathalie, VA



## TRACT 4: 71 Acres with stream (Owens Mill Rd)

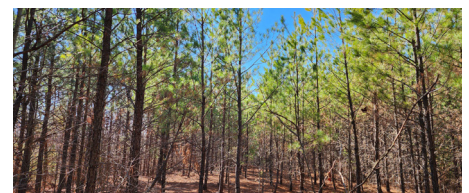
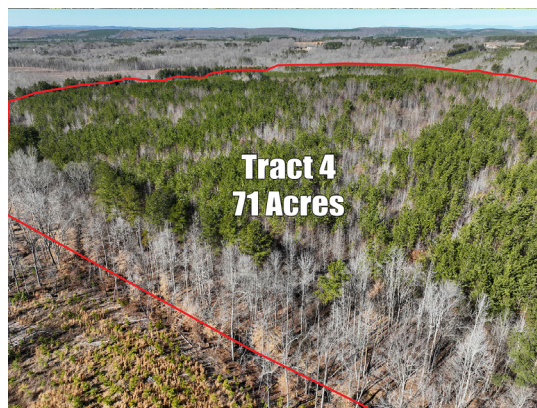
Great tract for hunting, recreation, timber investment, or getaway.

- Halifax County PRN# 20130
- Timbered in 2012 and replanted in pine.
- Some trails
- Long creek frontage

**FROM BROOKNEAL:** US-501S 1mi to RIGHT on VA-40W. 9.2mi to LEFT on Buffalo Rd (640). 0.7mi to RIGHT on Owens Mill Rd. 0.7mi to home at 1043 Owens Mill. Continue 0.3mi to old home. Property begins 500' ahead.

**FROM HALIFAX:** US-501N 13mi to LEFT on Cody Rd (603). 5.1mi to LEFT on Mulberry Rd (650). 0.7mi to RIGHT on Buffalo Rd (640). 0.7mi to RIGHT on Owens Mill Rd. 0.7mi to home at 1043 Owens Mill. Continue 0.3mi to old home. Property begins 500' ahead.

**GPS:** property on easement is 1043 Owens Mill Rd, Nathalie, VA



Online Bidding Available at

**bid.TRFAuctions.com**