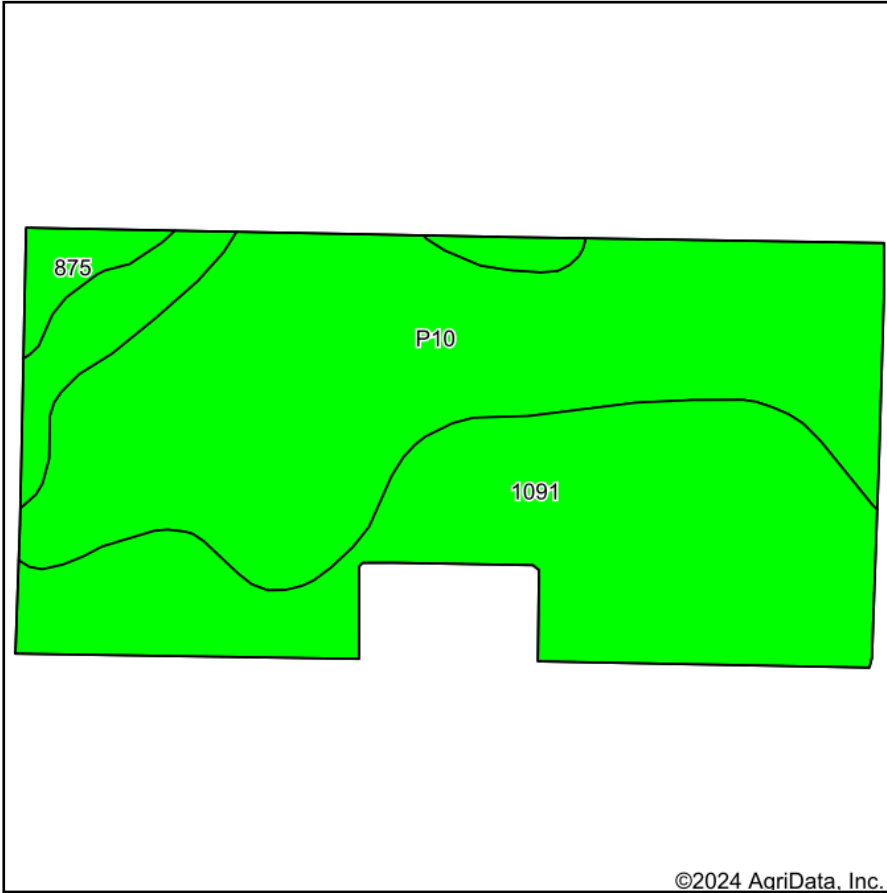
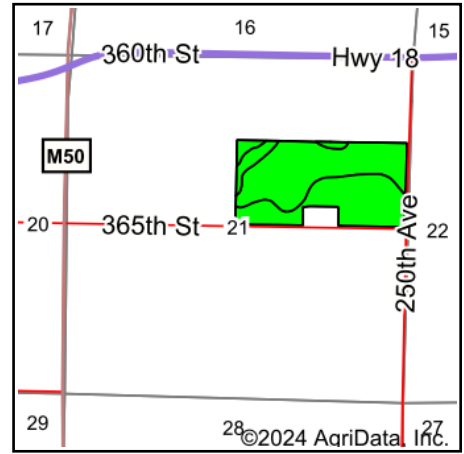


Soils Map



Soils data provided by USDA and NRCS.



State: **Iowa**
 County: **Clay**
 Location: **21-96N-36W**
 Township: **Sioux**
 Acres: **74**
 Date: **12/5/2024**



Area Symbol: IA041, Soil Area Version: 34

Code	Soil Description	Acres	Percent of field	CSR2 Legend	Non-Irr Class *c	CSR2**	CSR	
P10	Afton silty clay loam, Sheldon creek formation, 0 to 2 percent slopes, occasionally flooded	38.47	52.0%		IIw	82		
1091	McCreath silty clay loam, 0 to 2 percent slopes	33.80	45.7%		Iw	98	83	
875	Roine fine sandy loam, 0 to 2 percent slopes	1.73	2.3%		IIIs	86	46	
Weighted Average						1.57	89.4	*-

**IA has updated the CSR values for each county to CSR2.

*- CSR weighted average cannot be calculated on the current soils data, use prior data version for csr values.

*c: Using Capabilities Class Dominant Condition Aggregation Method